

International iQFOiL Class Association
iQFOiL Class Technical Committee

iQFOiL 530 CUTTING INSTRUCTIONS

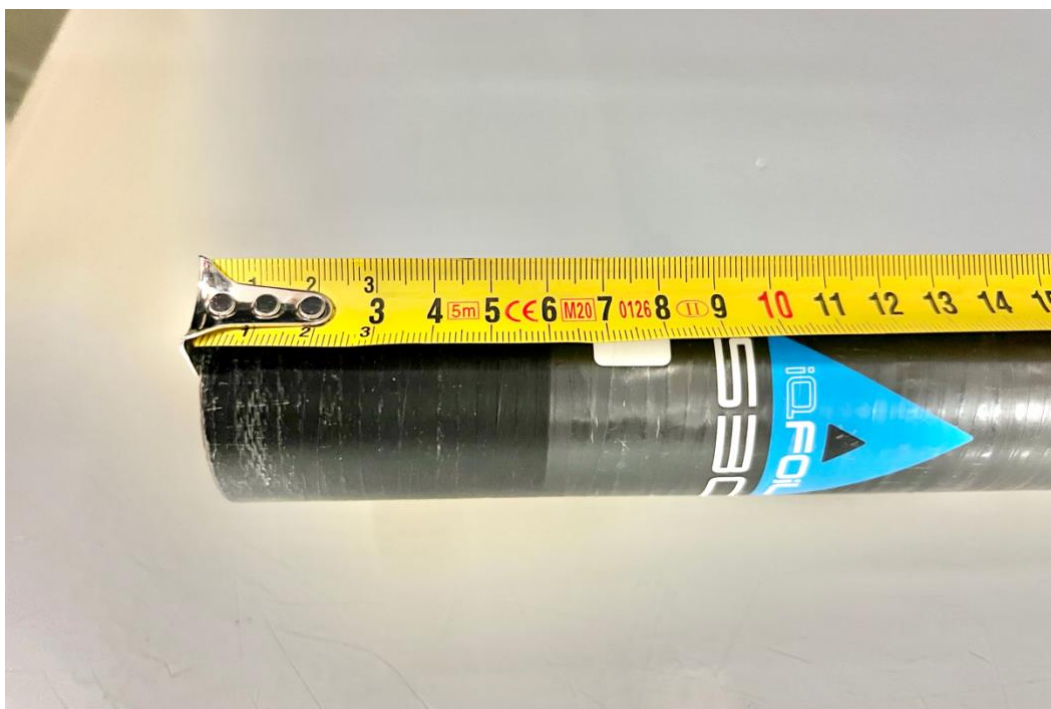
The 530 iQFOiL mast has to be reduced in length to be able to meet the luff of the iQFOiL 8.0 sail which is 522 cm.

After tests, cutting the top of the mast at the very top provided the best fit to the iQFOiL 8.0 luff curve.

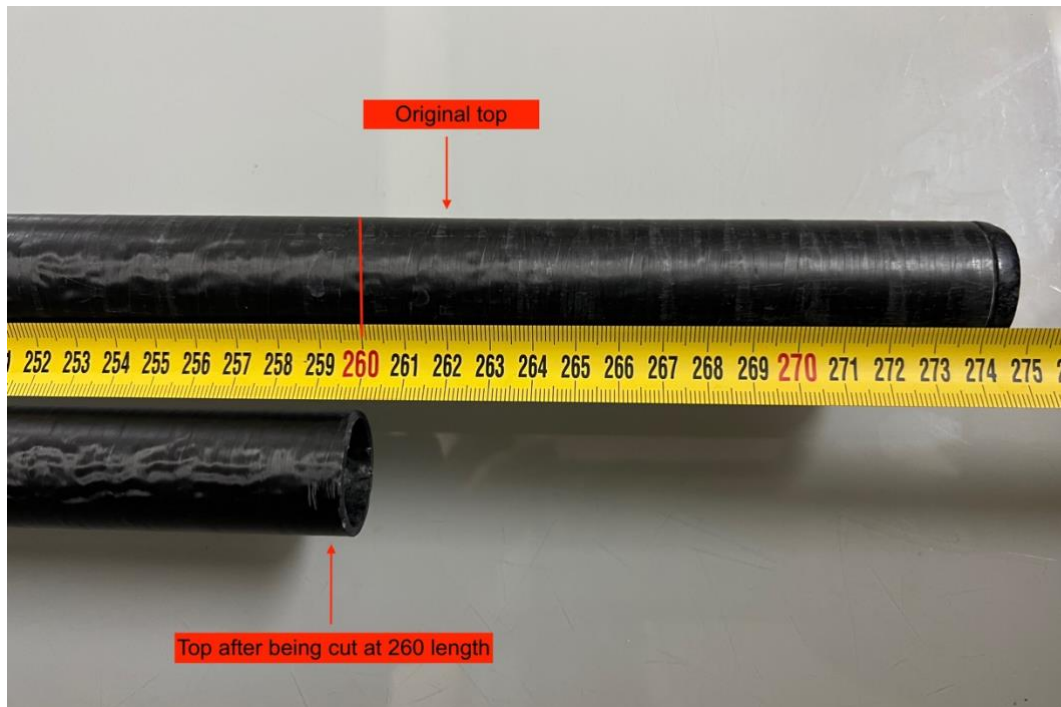
The 530 mast has to be cut at the top section. The bottom section remains untouched.

The top needs to be cut at the very top section (**not** at the connection with the base but at the very top). New length needs to be 260 cm \pm 0.5 cm.

INSTRUCTIONS



1/ Measurement starts at the base of the top section.



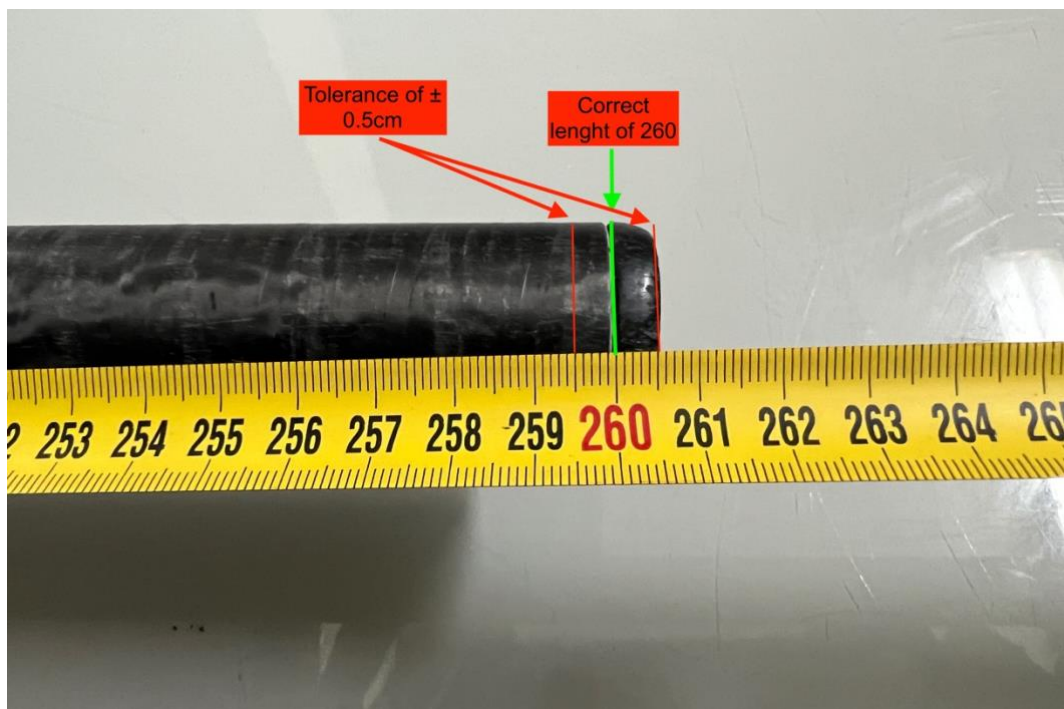
2/ cut at the very top of the top, at 260 cm from the base of the top on a 90 degree angle



3/ Plastic top cup can be removed and installed on the new top. The plastic cup top keeps the water out of the mast



4/ Plastic cup can be fitted easily on the top section. Any kind of glue or tape can be applied to guarantee that it doesn't come off.



5/ Final measure at 260 cm. A tolerance of $\pm 0.5\text{ cm}$ will be allowed